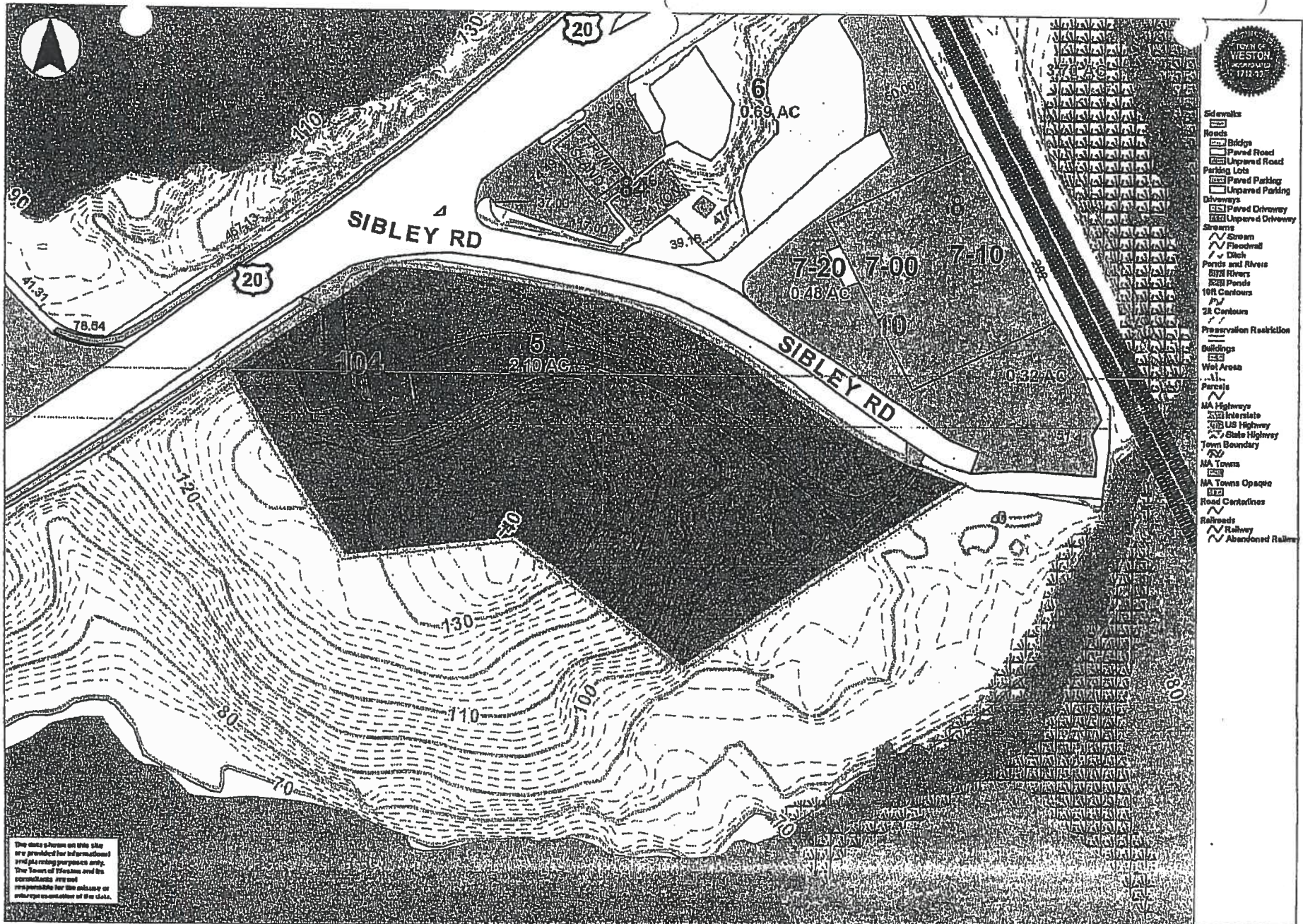


1.1 LOCATION MAP

See attached Civil Drawing 1 titled "Existing Conditions"
Prepared by Allen & Major Associates



The data shown on this site are provided for informational and planning purposes only. The Town of Weston and its consultants are not responsible for the release or misrepresentation of the data.

0 100 200 ft

Printed on 06/23/2014 at 03:18 PM

Weston MapsOnline

YOUR TRIP TO:

[8 - 98] Sibley Rd



28 MIN | 14.9 MI

Trip time based on traffic conditions as of 4:12 PM on November 21, 2016. Current Traffic: Heavy



1. Start out going **east** on Beacon St toward Tremont St.

Then 0.03 miles

0.03 total miles



2. Take the 1st **right** onto Tremont St.

King's Chapel is on the corner.

If you are on School St and reach Chapman Pl you've gone a little too far.

Then 0.71 miles

0.74 total miles



3. Turn **right** to stay on Tremont St.

Tremont St is 0.1 miles past Seaver Pl.

If you are on Shawmut Ave and reach Marginal St you've gone a little too far.

Then 0.15 miles

0.89 total miles



4. Turn **slight right** onto Marginal St.

Marginal St is just past Church St.

If you reach Herald St you've gone a little too far.

Then 0.06 miles

0.95 total miles



5. Merge onto I-90 W/Massachusetts Tpke W (Portions toll).

Then 10.39 miles

11.34 total miles



6. Take the **I-95/MA-128** exit, EXIT 15, toward **Waltham/Dedham**.

Then 0.35 miles

11.69 total miles



7. Keep **left** at the fork in the ramp.

Then 0.48 miles

12.17 total miles



8. Keep **left** at the fork in the ramp.

Then 0.13 miles

12.30 total miles



9. Merge onto I-95 N/MA-128 N/Yankee Division Hwy N toward **Portsmouth NH**.

Then 1.78 miles

14.08 total miles



10. Take the **US-20** exit, EXIT 26, toward **Waltham/Weston**.

Then 0.13 miles

14.21 total miles