

# Case Park Restoration and Rehabilitation Phase 2

CPC Meeting, March 21, 2022



---

Lori Hess, TAG Chair

Carol Lee, TAG member

Nicole Seddon, TAG member

# Case Park Restoration Goals

---

- Increase community usage
- Improve ecological benefits
  - Provide pollinator habitat
  - Keep water usage low
  - Keep maintenance low
- Provide living example of sustainable landscaping practices

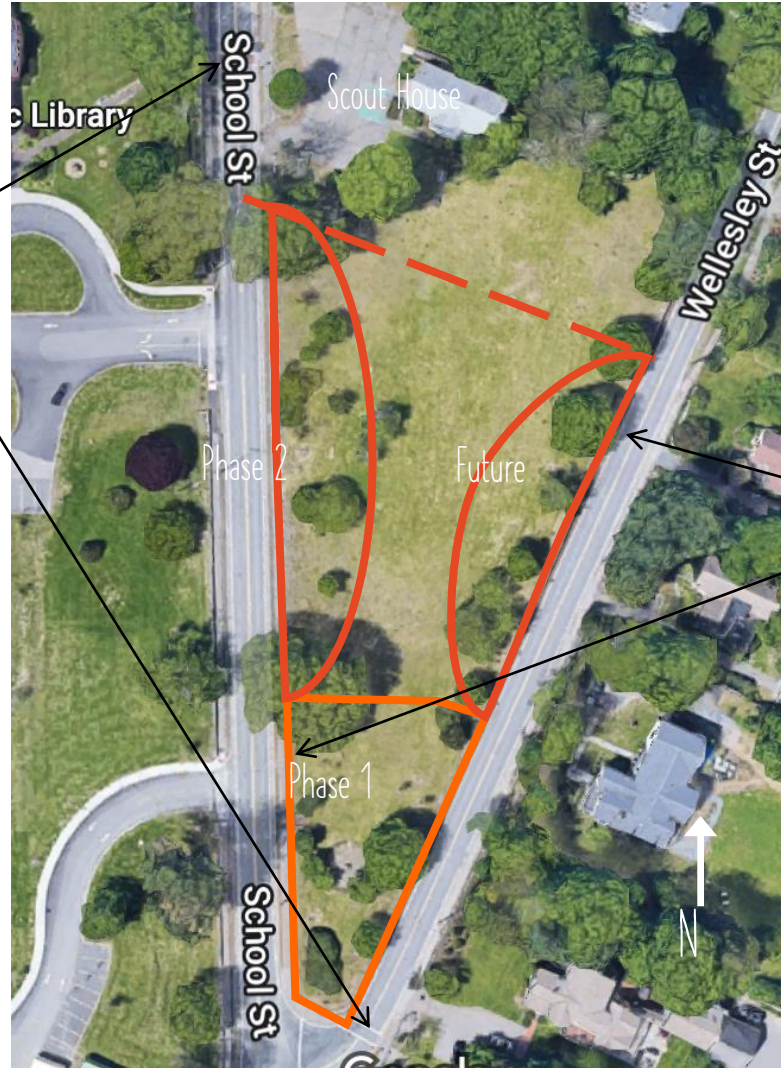
# Background

---

- 1.5 acre park deeded to Weston by the Case sisters in 1946; part of Case's Corner Historical District
- CPC awarded \$45,117 (FY2019) to implement 2017 design, focused on ecologically beneficial plantings
- During outreach, concerns about maintenance and low visual impact led to rework as Phase 1, with focus on "the Point" (~0.4 acre southern tip)
- Phase 1 design finalization postponed by Covid and new DPW priorities; current plans for Spring 2023 planting

# Case Park Project Phases

crosswalks



opening in wall,  
no crosswalk

# Conceptual Design

## Improve edges, retain lawn

---



# Conceptual Design Cross Section

Establish engaging views from inside & outside







Phase 1 Area As Is







# Phase 1 Progress

---

- New landscape architect hired in 2021
- New plans & plant lists developed with DPW
- Soil tests, soil and lawn improvements
- Replacement plaque purchased
- Water access secured from Scouts

# Phase 2 Focus

---

- Improve plantings along School St.
- Continue emphasis on primarily native species with benefits to pollinators and birds
- Continue to maximize visual appeal, minimize maintenance
- Provide educational materials
- Add seating, [chess] table
- Make Case Park a "destination"

# Phase 2 Budget

---

Item	Estimated Cost
Schematic Design	\$4,000
Bid Phase	\$1,000
Materials	\$12,000
Construction Oversight	\$1,000
Installation	\$22,000
Training, public outreach material	\$2,000
Total	\$42,000

# Phase 2 Project Timeline

---

- Fall 2023: Final planting plan
- Winter 2023: Bid process
- Spring 2024: Planting



# Thank You



- Questions?