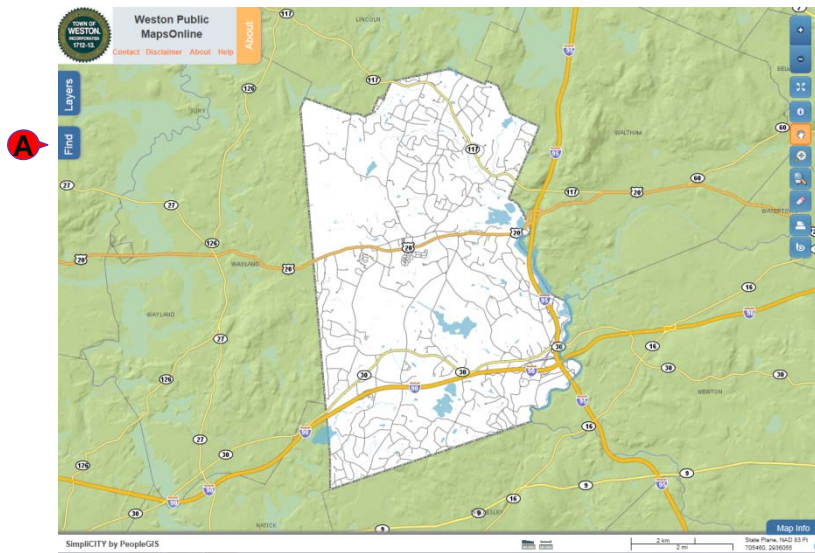


# User Guide to Weston MapsOnline

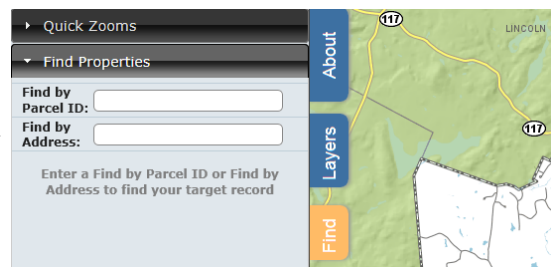
## Finding Weston MapsOnline

- Go to the Town of Weston website at <http://www.weston.org>
  - Select **WESTON ONLINE MAPS** from the left side of the homepage,
  - On the new web page, click on the map image to the right of **GIS MapsOnline**
- Or you may go directly to <http://www.mapsonline.net/westonma/index.html>



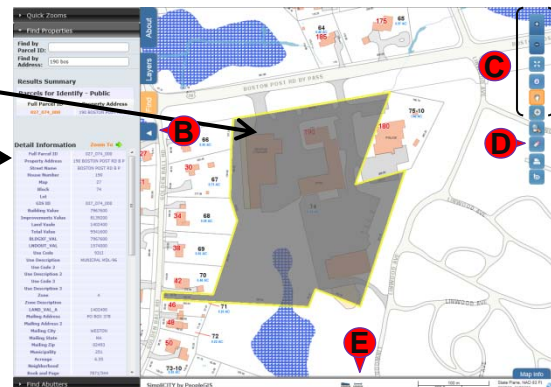
## Finding a specific property

- Click on the blue Find tab on the left side (A)
- Enter Parcel ID or Address in upper left



The parcel you are seeking will be highlighted and shaded.  
Detail information about the parcel will appear on the left side of the screen.

- To hide information, click on left-arrow tab (B)
- To zoom and move within map, use tools in upper right (C)
- To remove parcel highlighting and shading, use eraser tool (D)
- To measure an area or distance, use ruler tools (E)

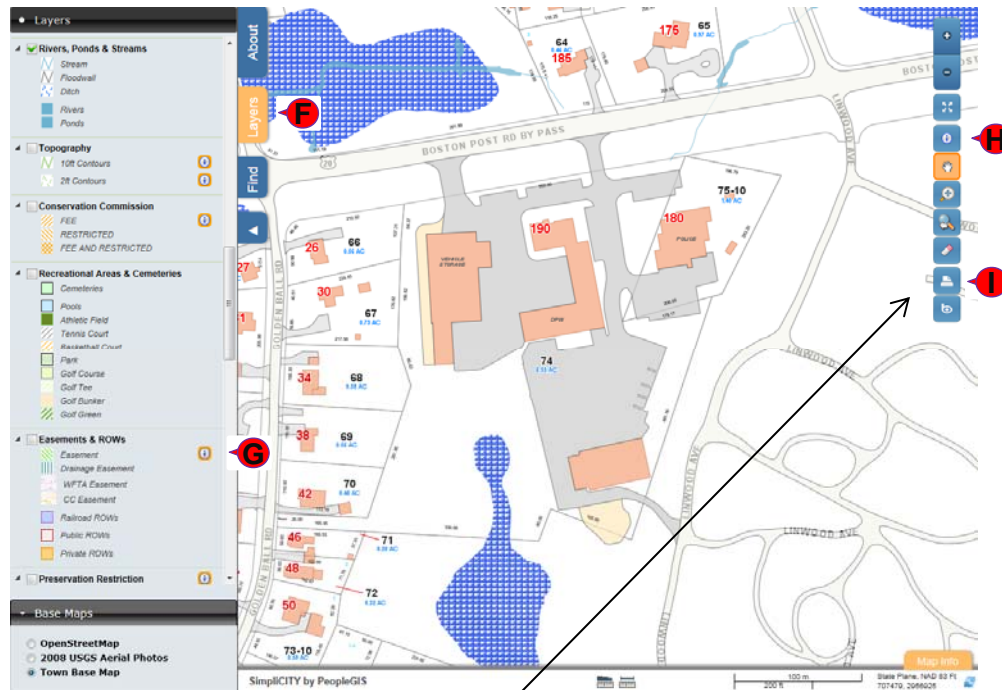


## Customizing the map

MapsOnline provides a wide variety of different data layers, including Parcels, Buildings, Streets, Driveways, Parking, Sidewalks, Trails, Fences, Water Bodies and Wet Areas, Topography, Conservation and Recreation Land, Easements, FEMA Flood Hazard areas, and Zoning.

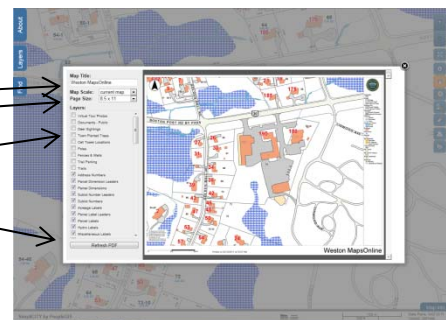
To turn map data on and off:

- Click **Layers** tab (F) to show (or hide) the list of layers
- Click the small box to the left of any layer name to toggle that layer on and off in the map
- To view additional information, click on a feature in that layer with the **information** tool (H)



## Printing the map

- Click on the **Printer** symbol on the right (I)
- In the pop-up, change the **Map Title** if you wish
- Pick the **Page Size** you want
- Turn additional **Layers** on or off as desired
- Click on **Refresh PDF** to view the updated map
- To print, hover your cursor over the bottom of the map, then click on the **Printer** symbol to view the **Print** pop-up dialogue



In maintaining its GIS Data, the Town of Weston has made every effort to ensure the accuracy, currency and reliability of the content thereof however, errors can occur. In addition, some information, such as wetlands and streams, are approximate and it is advisable to contact the Conservation Department for more information. It is expressly understood and agreed that in producing this information, the Town of Weston, its officials, agents, servants and employees does not warrant or guarantee the information it has provided, nor does it accept responsibility for any errors contained therein. In no event will the Town of Weston, its officials, agents, servants and employees be deemed or held obligated, liable, or accountable for any loss or damage incurred or resulting from the use of the information provided.

If you have additional questions, please call the GIS Department at (781) 786-5116